

GOVERNMENT DEGREE COLLEGE,RAZOLE,E.G.DIST.

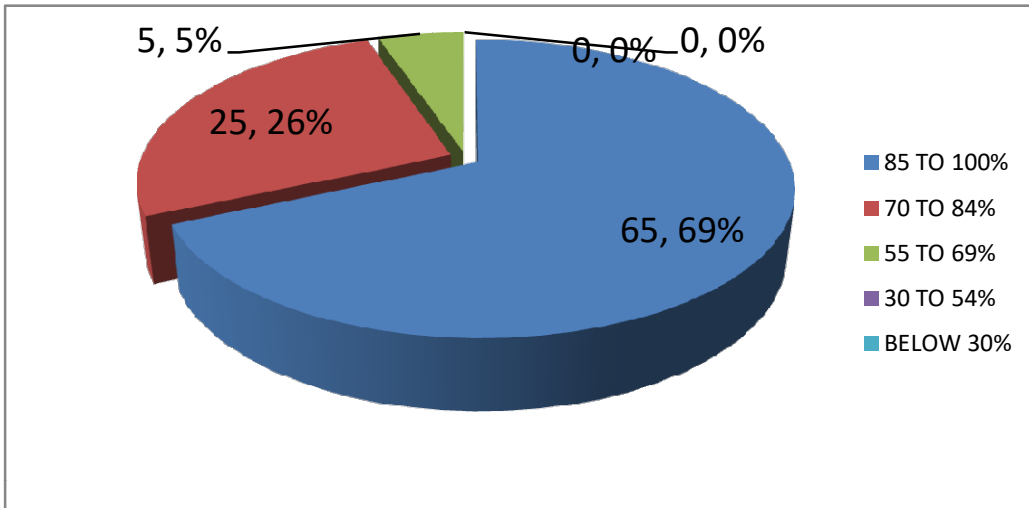
SATISFACTION SURVEY

TEACHING -LEARNING AND EVALUATION-2019-2020

TOTAL STUDENTS PARTICIPATED:95

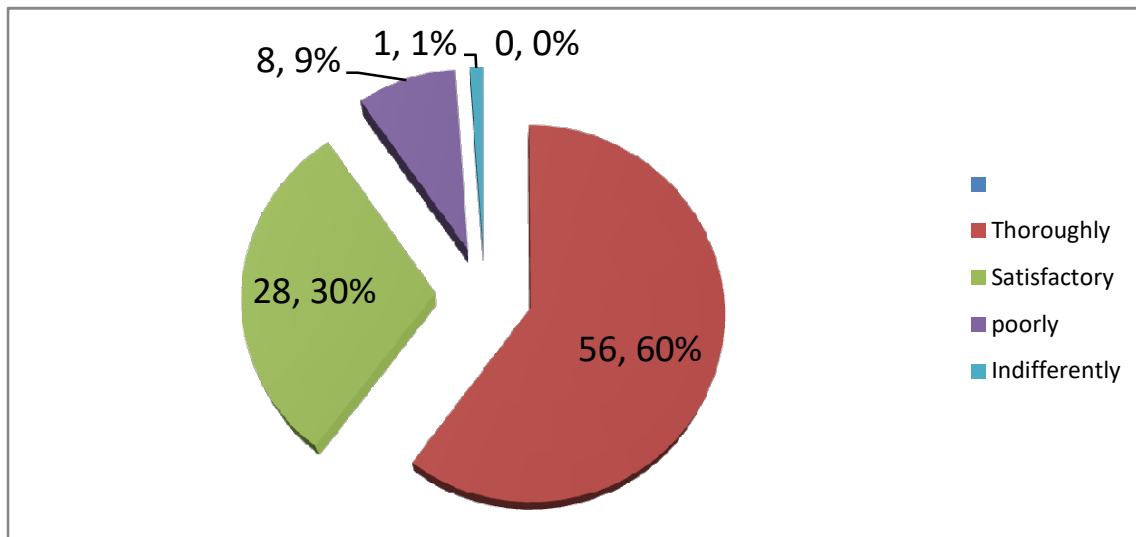
Q.1. HOW MUCH OF THE SYLLABUS WAS COVERED IN THE CLASS ?

| 85 TO 100% | 70 TO 84% | 55 TO 69% | 30 TO 54% | BELOW 30% |
|------------|-----------|-----------|-----------|-----------|
| 65 | 25 | 5 | 0 | 0 |



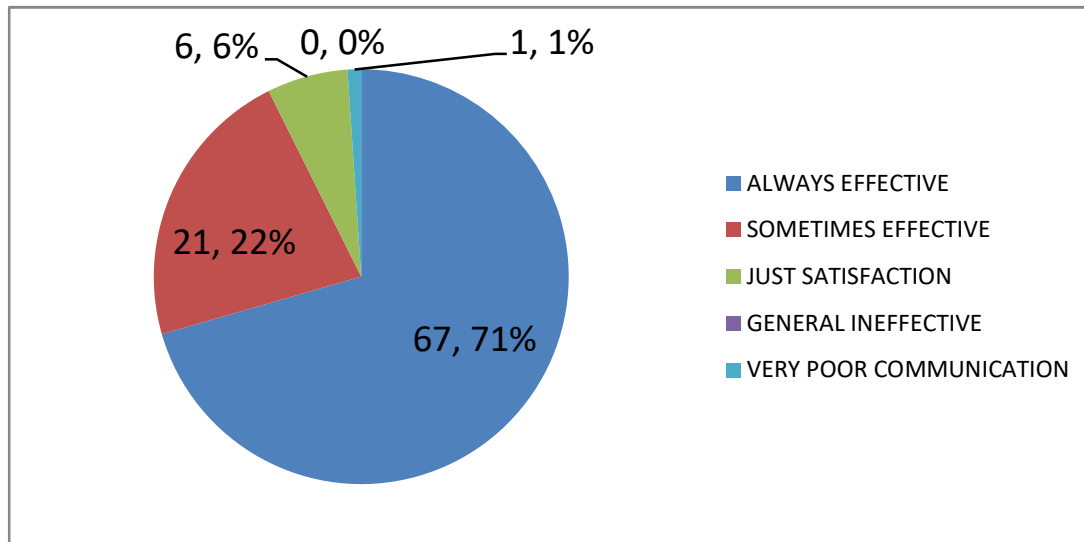
Q.2 How well did the teachers prepare for the classes ?

| | Thoroughly | Satisfactory | poorly | Indifferently | Won't teach at all |
|--|------------|--------------|--------|---------------|--------------------|
| | 56 | 28 | 8 | 1 | 2 |



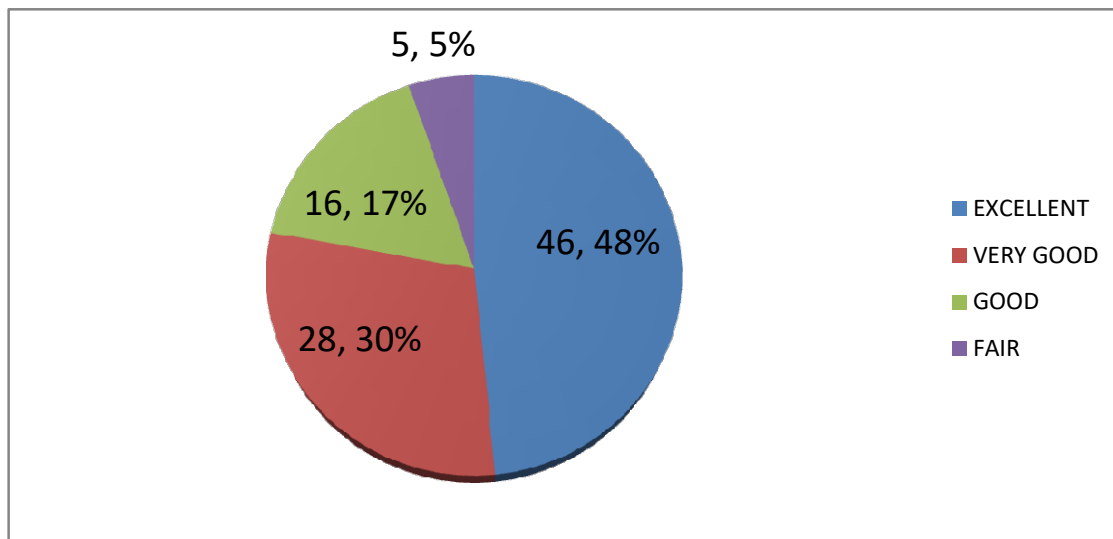
Q.3. HOW WELL WERE THE TEACHERS ABLE TO COMMUNICATE ?

| ALWAYS EFFECTIVE | SOMETIMES EFFECTIVE | JUST SATISFACTION | GENERAL INEFFECTIVE | VERY POOR COMMUNICATION |
|------------------|---------------------|-------------------|---------------------|-------------------------|
| 67 | 21 | 6 | 0 | 1 |



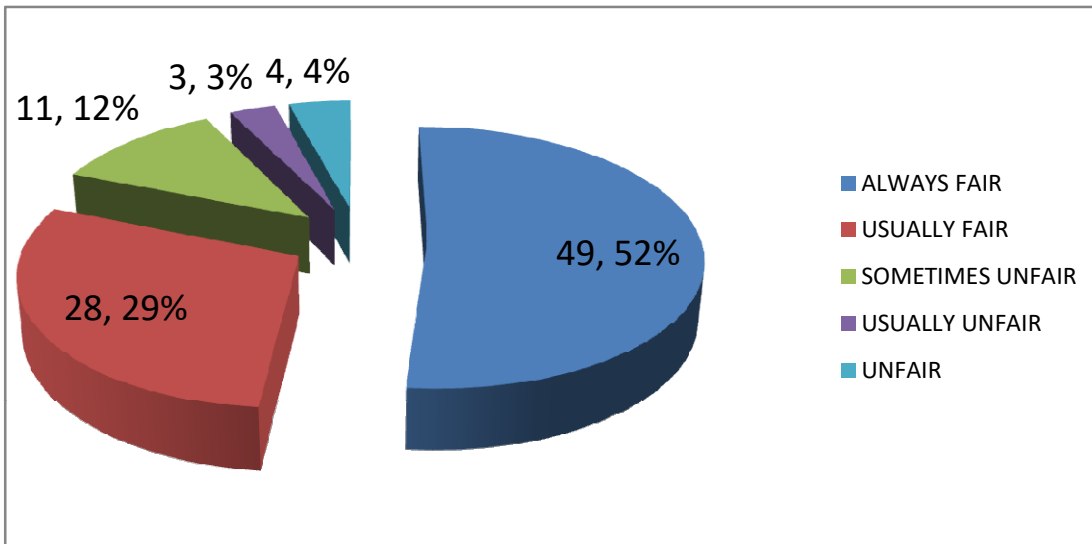
Q.4. THE TEACHER'S APPROACH TO TEACHING CAN BEST BE DESCRIBED AS

| EXCELLENT | VERY GOOD | GOOD | FAIR |
|-----------|-----------|------|------|
| 46 | 28 | 16 | 5 |



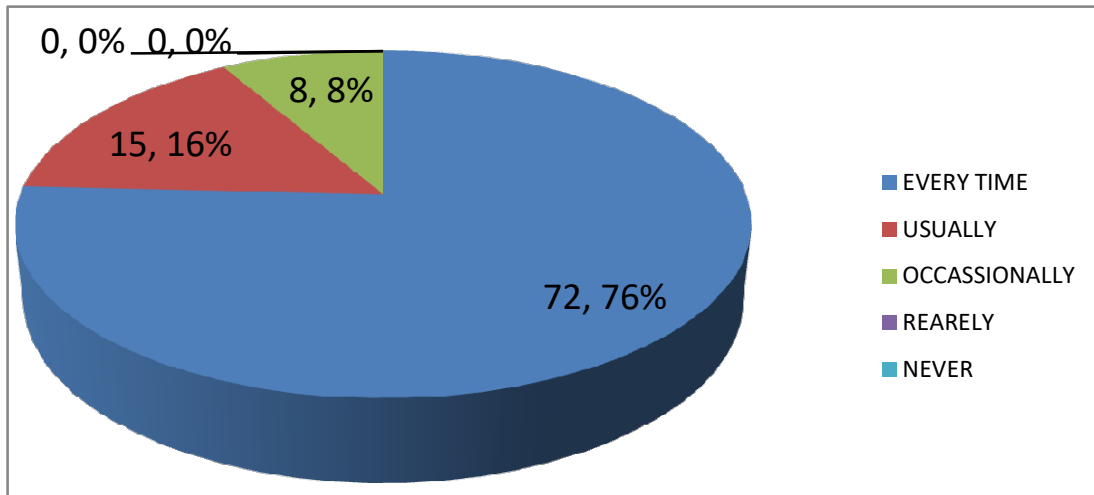
Q.5.FAIRNESS OF THE INTERNAL EVALUATIONN PROCESS BY THE TEACHERS

| ALWAYS FAIR | USUALLY FAIR | SOMETIMES UNFAIR | USUALLY UNFAIR | UNFAIR |
|-------------|--------------|------------------|----------------|--------|
| 49 | 28 | 11 | 3 | 4 |



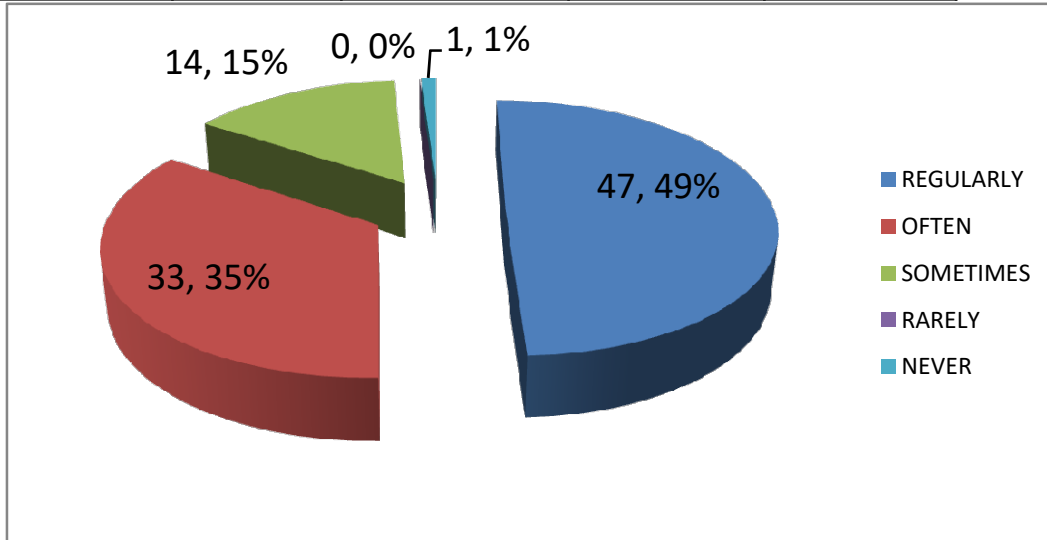
Q.6.WAS YOUR PERFORMANCE IN ASSIGNMENT DISCUSSED WITH YOU ?

| EVERY TIME | USUALLY | OCCASSIONALLY | REARELY | NEVER |
|------------|---------|---------------|---------|-------|
| 72 | 15 | 8 | 0 | 0 |



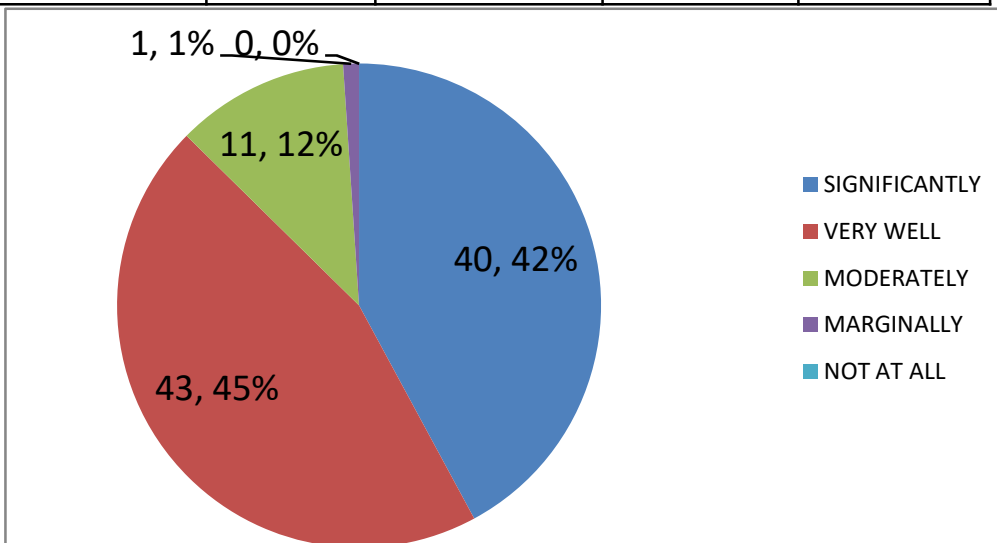
**Q.7.THE INSTITUTE TAKES ACTIVE INTREST IN PROMOTING INTERNSHIP STUDENT EXCHANGE,
FIELD VISIT OPPORUTUNITIES FOR STUDENTS**

| REGULARLY | OFTEN | SOMETIMES | RARELY | NEVER |
|-----------|-------|-----------|--------|-------|
| 47 | 33 | 14 | 0 | 1 |



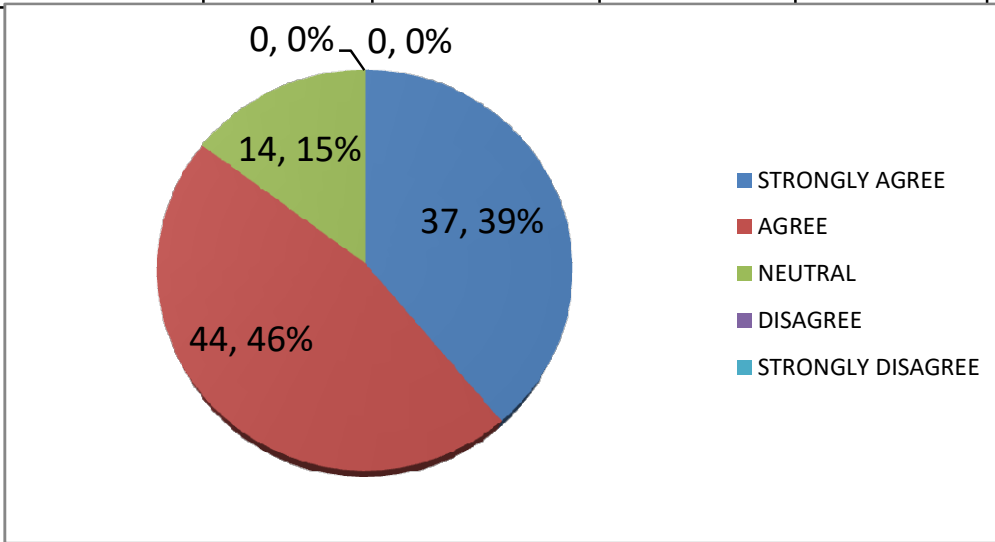
**Q.8.THE TEACHING AND MENTORING PROCESS IN YOUR INSTITUTION FACILITIES YOU
IN CONGNITIVE,SOCAIL AND EMOTIONAL GROWTH**

| SIGNIFICANTLY | VERY WELL | MODERATELY | MARGINALLY | NOT AT ALL |
|---------------|-----------|------------|------------|------------|
| 40 | 43 | 11 | 1 | 0 |



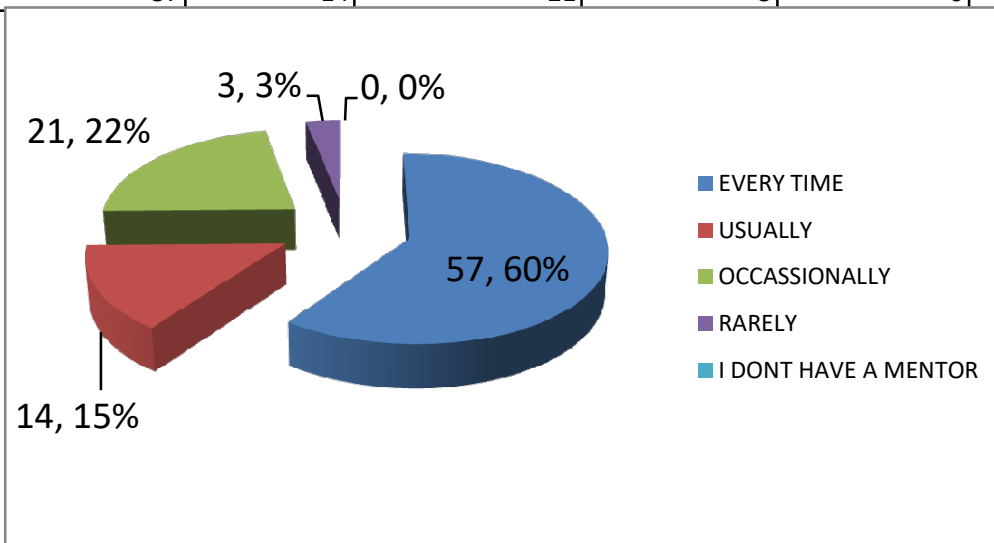
9. THE INSTITUTE PROVIDES MULTIPLE OPPURTUNITIES TO LEARN AND GROW

| STRONGLY AGREE | AGREE | NEUTRAL | DISAGREE | STRONGLY DISAGREE |
|----------------|-------|---------|----------|-------------------|
| 37 | 44 | 14 | 0 | 0 |



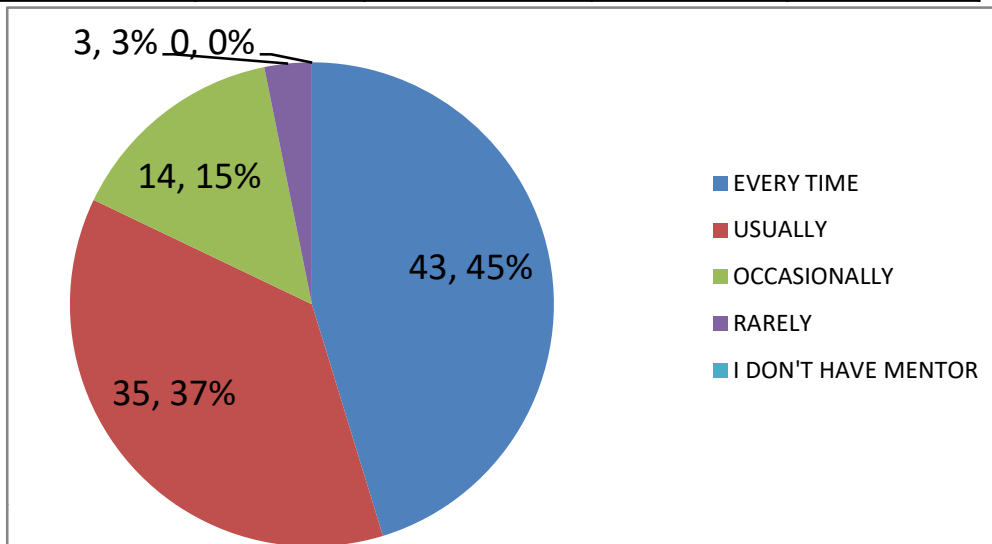
10. TEACHERS INFORM YOU ABOUT YOUR EXPECTED COMPETENCIES, COURSE OUTCOMES AND PROGRAM OUTCOMES.

| EVERY TIME | USUALLY | OCCASSIONALLY | RARELY | I DONT HAVE A MENTOR |
|------------|---------|---------------|--------|----------------------|
| 57 | 14 | 21 | 3 | 0 |



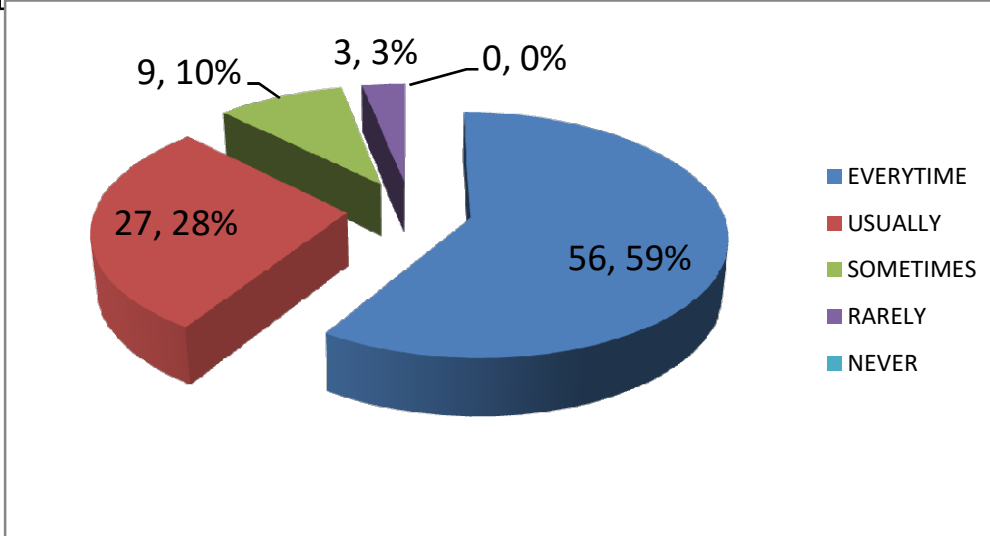
Q.11.YOUR MENTOR DOES A NECESSARY FOLLOW-UP WITH AN ASSIGNED TASK TO YOU

| EVERY TIME | USUALLY | OCCASIONALLY | RARELY | I DON'T HAVE MENTOR |
|------------|---------|--------------|--------|---------------------|
| 43 | 35 | 14 | 3 | 0 |



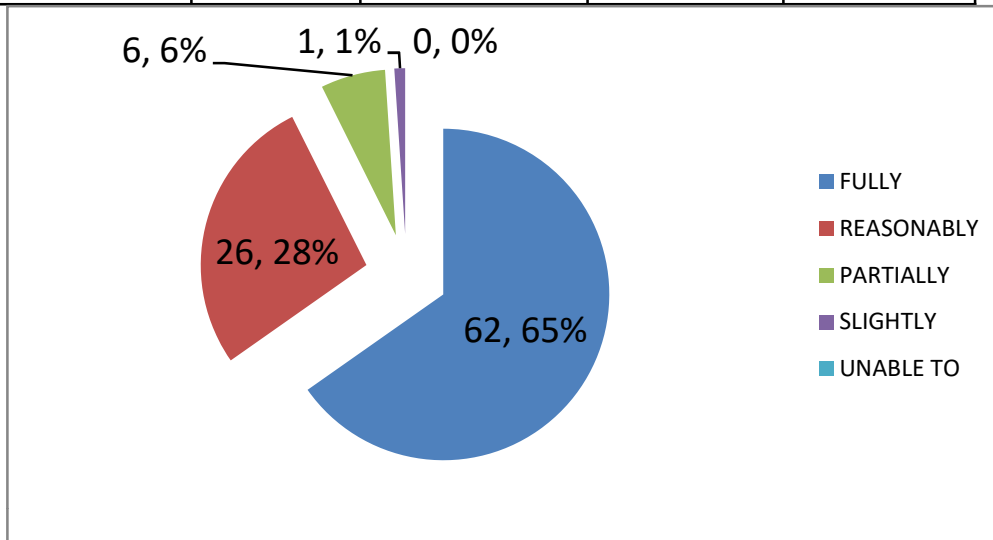
Q.12 THE TEACHERS ILLUSTRATE THE CONCEPTS THROUGH EXMPLES AND APPLICATIONS

| EVERYTIME | USUALLY | SOMETIMES | RARELY | NEVER |
|-----------|---------|-----------|--------|-------|
| 56 | 27 | 9 | 3 | 0 |



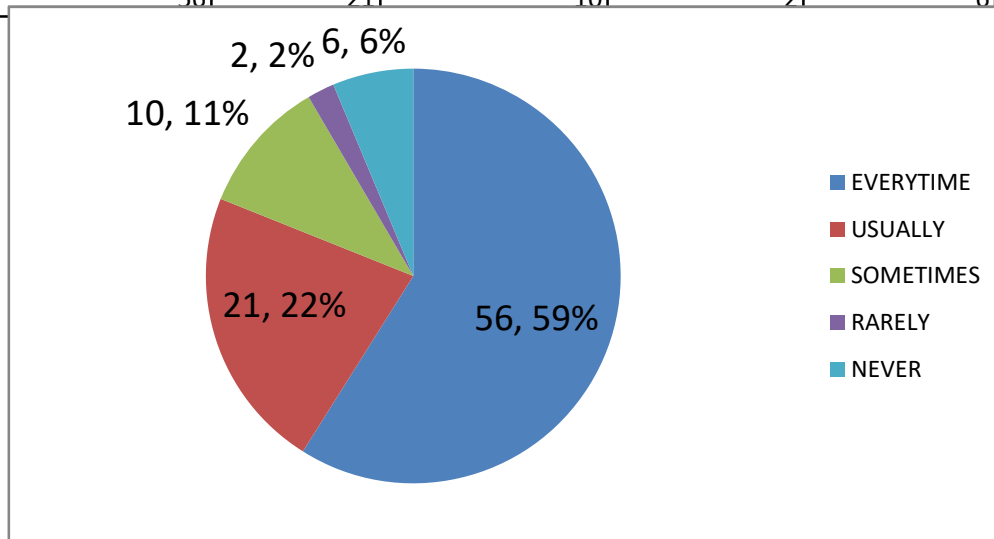
13. THE TEACHER IDENTIFY YOUR STRENGTHS AND ENCOURAGE YOU WITH PROVIDING RIGHT LEVEL OF CHALLENGES

| FULLY | REASONABLY | PARTIALLY | SLIGHTLY | UNABLE TO |
|-------|------------|-----------|----------|-----------|
| 62 | 26 | 6 | 1 | 0 |



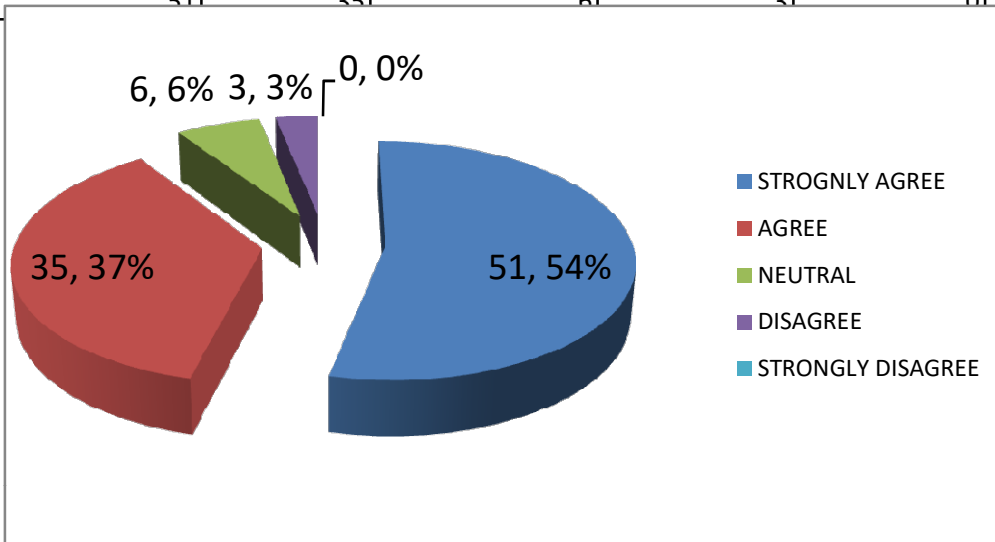
14. TEACHERS ARE ABLE TO IDENTIFY YOUR WEAKNESS AND HELP YOU TO OVERCOME THEM

| EVERYTIME | USUALLY | SOMETIMES | RARELY | NEVER |
|-----------|---------|-----------|--------|-------|
| 56 | 21 | 10 | 2 | 6 |



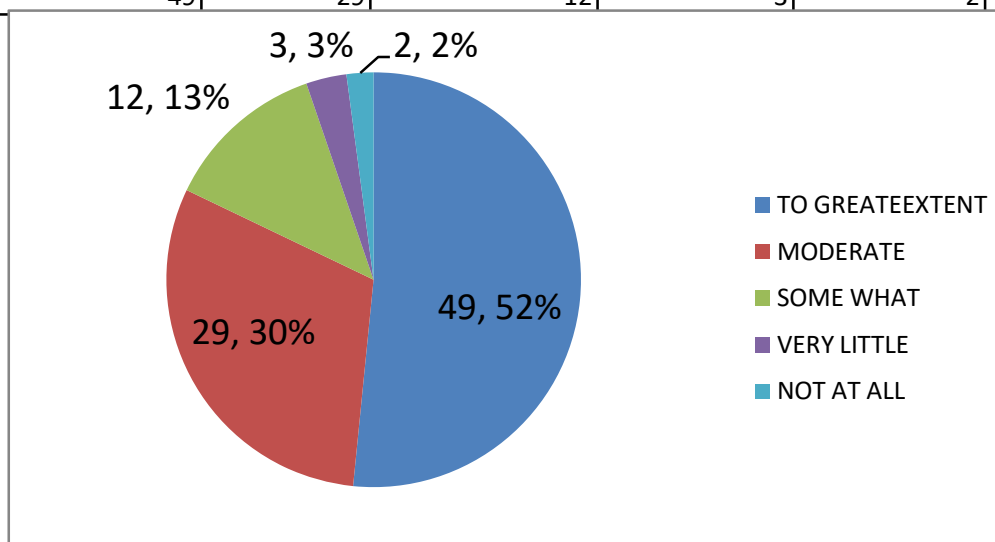
15. THE INSTITUTION MAKES EFFORT TO ENGAGE STUDENTS IN THE MONITORING , CONTINUOUS QUALITY IMPROVEMENT OF THE TEACHING LEARNING PROCESS

| STROGNLY AGREE | AGREE | NEUTRAL | DISAGREE | STRONGLY DISAGREE |
|----------------|-------|---------|----------|-------------------|
| 51 | 35 | 6 | 3 | 0 |



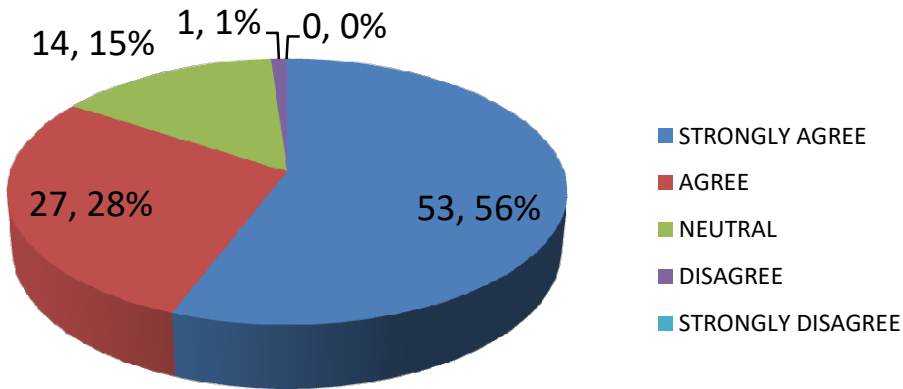
16. THE INSTITUTION MAKES EFFORT TO ENGAGE STUDENTS IN THE MONITORING , REVIEW AND PROBLEM SOLVING METHODOLOGIES FOR ENHANCING LEARNING EXPERIENCES

| TO GREATEEXTENT | MODERATE | SOME WHAT | VERY LITTLE | NOT AT ALL |
|-----------------|----------|-----------|-------------|------------|
| 49 | 29 | 12 | 3 | 2 |



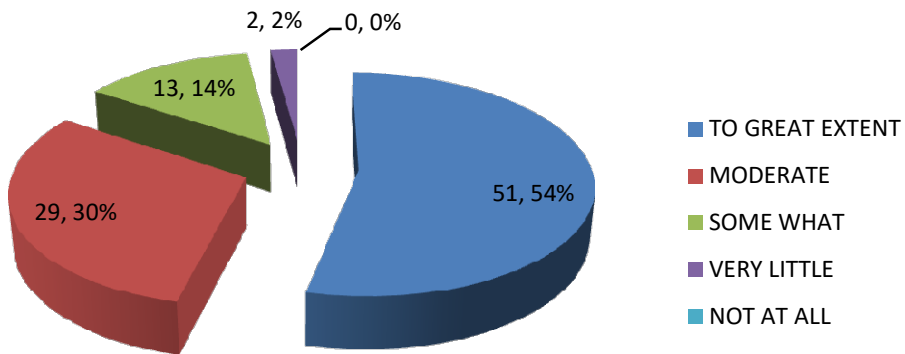
17.TEACHERS ENCOURAGE YOU TO PARTICIPATE IN EXTRACURRICULAR ACTIVITIES

| STRONGLY AGREE | AGREE | NEUTRAL | DISAGREE | STRONGLY DISAGREE |
|----------------|-------|---------|----------|-------------------|
|----------------|-------|---------|----------|-------------------|

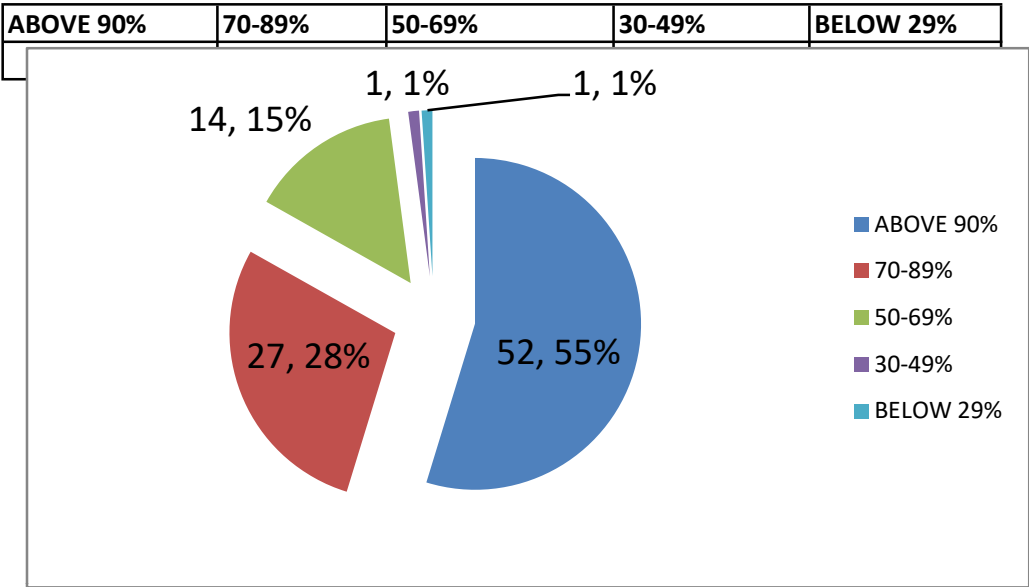


18.EFFORTS ARE MADE BY THE INSTITUTE TO INCULCATE SOFTSKILLS,LIFE SKILLS AND EMPLOYABILITY SKILLS TO MAKE YOU READY FOR THE WORLD OF WORK

| TO GREAT EXTENT | MODERATE | SOME WHAT | VERY LITTLE | NOT AT ALL |
|-----------------|----------|-----------|-------------|------------|
|-----------------|----------|-----------|-------------|------------|



Q.19 WHAT PERCENTAGE OF TEACHERS USE ICT TOOLS SUCH AS LCD PROJECTOR MULTIMEDIA ETC.WHILE TEACHINNG



Q.20.THE OVERALL QUALITY OF TEACHING -LEARNING PROCESS IN YOUR INSTITUTE IS VERY GOOD

